



GS-506

GRADE THE MOST PROFITABLE WAY FOR YOU

Whether for dozer, grader, kilver or levelling blade, the 2D levelling system gives your machine a technology upgrade to eclipse all others.

CHALLENGES IN EARTHMOVING

Precise grading work is essential in the earthmoving sector to ensure both the quality and efficiency of a construction project. Traditional methods, where operators estimate excavation depth visually, often lead to inaccuracies. This results in additional control measurements and rework, increasing machine wear as well as fuel consumption and CO emissions.

2



LACK OF PRECISION

during grading leads to uneven surfaces and the need for constant corrections.



EXCESSIVE MATERIAL USAGE

due to imprecise depth control results in unnecessary removal and higher costs.



INEFFICIENT WORKFLOWS

from repeated manual measurements and corrections cause delays and increased machine downtime.



PROFITABLE GRADING GS-506

Whether for crawlers, graders, kilvers, or levelling blades, the 2D levelling system upgrades your machine with advanced height and inclination control. The coulter is fully automated, ensuring evenly distributed material and flawless flatness.

With unique features like the side-shift function, it achieves optimal levelling even during corners or evasive manoeuvres. Referencing points such as string-lines or kerb stones, the system readjusts in real time, saving time and boosting ROI.

Modular and expandable to 3D applications, the GS-506 adapts to any machine, supported by MOBA's hydraulic expertise for tailored solutions in earthmoving



Precise leveling

Automatic height and inclination control ensures even material distribution and perfect flatness.



Unique side-shift function

Real-time adjustments enable optimal results during cornering or evasive maneuvers.



Modular and scalable

Expandable to 3D applications with a wide range of high-end sensors.

THE TECHNOLOGY BEHIND THE GS-506

The specially developed display combines ergonomic design with user-friendly features, including intuitive symbols enhanced by LEDs. All connected sensors are clearly visible at a glance, ensuring seamless operation even when sensors are changed, minimizing familiarization time. Its robust construction withstands tough construction conditions, while the backlighting ensures readability in any sunlight. With IP54 protection, it reliably resists wind and weather.



SYSTEM PROPERTIES

- CAN technology
- Ergonomic display
- Robust hardware
- Multilingual language menu
- Assistance system for the operator

ADVANTAGES

- High-quality planum
- Time saving thanks to fully automatic coulter adjustment
- Precise levelling along curves
- Compatibility with any machine and any application

"The system's ease of integration with our graders and levelling blades is unmatched. The side-shift function handles tight corners effortlessly, and the modular setup allows us to scale up to 3D applications as needed."

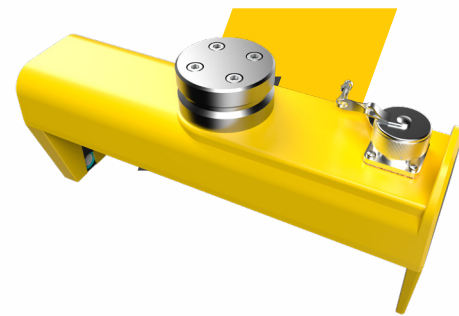
"The GS-506 has completely transformed our earthmoving operations. Its precise levelling and automated adjustments have drastically reduced material waste and saved us hours on every project"

"With the GS-506, we've achieved consistent results even under tough conditions. The system paid for itself within months by cutting downtime and improving productivity."



MODULAR APPLICATION MIRACLE

SONIC SKI PLUS



HIGHER-PRECISION ULTRASONIC SCANNING

The version with the Sonic Ski PLUS sensor is ideal for leveling above a reference. Whether over a channel, a rope or a floor, the ultrasonic sensor for non-contact - and therefore wear-free - scanning can be adapted to the respective reference in just a few simple steps.

Designed to be particularly user-friendly, the operator can make all presettings directly via the sensor buttons without having to leave the machine. The sideshift function regulates the coulter fully automatically, minimizing potential sources of error and saving time at the same time.

LS-3000 & LS-2000



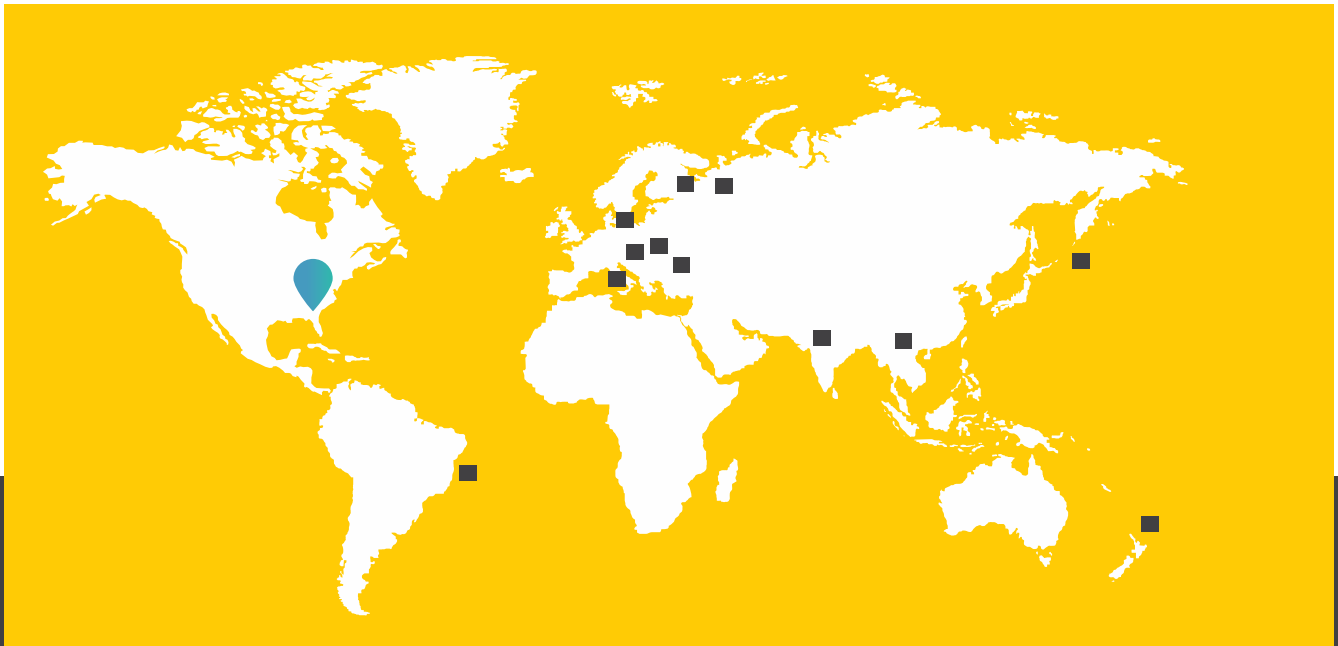
WORKING IN OPEN TERRAIN

The LS-3000 and LS-2000 are used for work in open terrain. In combination with a linear laser receiver as an optical reference, it ensures optimum flatness. The special feature: The sophisticated system enables simple operation from the operator's platform. The automatic laser search significantly speeds up the adjustment process, minimizes the workload and reduces the safety risk for the driver. The LS-3000 has the benefit to set the working point within the exceptionally large reception range of 30 cm and 360° can be conveniently set from the cab.

MOBA CORPORATION

MOBA Corporation has been a major player in mobile automation for more than 50 years. Our know-how and experience make us a globally recognized expert. We develop and produce innovative machine control systems, identification and mobile weighing technologies, as well as flexible software solutions. MOBA components and systems are also used in areas where robust and reliable sensors, controllers and control units are needed.

First Choice In Mobile Automation - our vision since 1972



CONTACT



MOBA Corporation
1000 MOBA Drive
Peachtree City, GA 30269
moba-automation.com